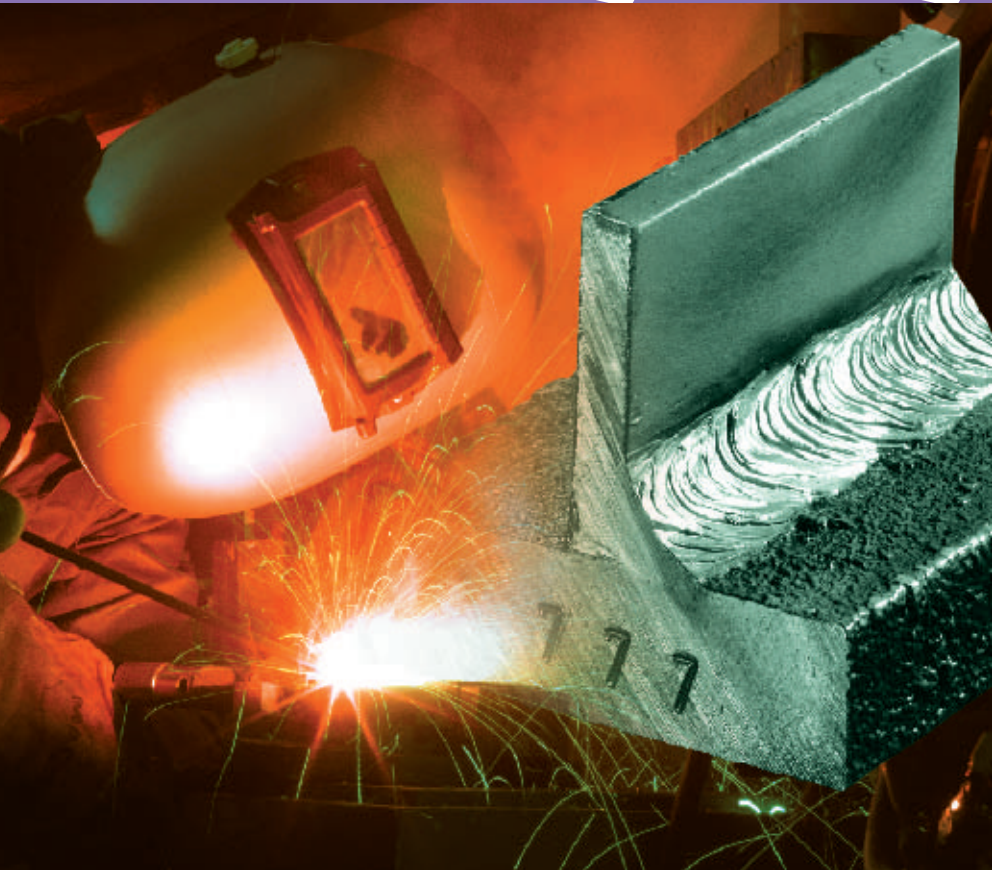




# 777



## Generation II Machinable Electrode for Cast Iron

- *Superior design enables economical use on virtually all types of cast iron.*
- *High-tech "controlled blast" pulse action automatically burns off surface contaminants before weld metal transfer.*
- *Advanced "Twin Core" stops electrode overheating – even under difficult AC amperage.*

**TRUST** *Ease of Application*  
**MAGNA** *Wide Versatility*  
**FOR** *Outstanding Physical Properties*

**MAGNA INDUSTRIAL CO. LIMITED**  
— Total Quality Maintenance



## SPECIAL FEATURES

**Magna 777's Generation II Machinable Electrode for Cast Iron** is the single greatest advance in the welding of cast iron.

- **Magna 777** superior design also enables its reliable use on virtually all types of cast iron so that users can reduce their stock of various electrodes and cut operating costs.
- **Magna 777's** high-tech "controlled blast" pulse action automatically degreases and cleans oily cast iron, while burning off surface contaminants including scaling and oxides before weld metal transfer.
- **Magna 777** utilizes a highly advanced fabrication process that eliminates electrode overheating – even under the most difficult AC amperage loading conditions.

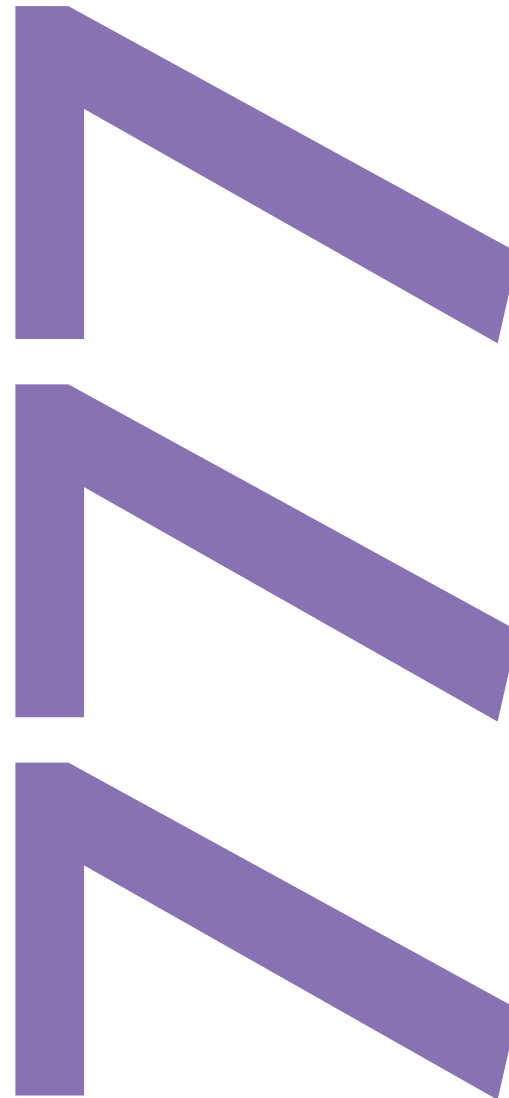
## OUTSTANDING PROPERTIES

**Magna 777 is the super electrode for cast iron that:**

- Almost automatically "chamfers" the metal surface to improve the weld's holding power.
- Prevents martensitic formation for improved machinability.
- Eliminates pin- and blow-holes in the weld.
- Provides automatic pre-heating for parts being welded.
- Eliminates waste of electrodes discarded due to overheating.

## USE FOR

**Magna 777 (for AC & DC)** is the "Welders' Choice" for virtually all types of cast iron – including joining cast iron parts to steel. Use **Magna 777** on grey, nodular and malleable cast iron. **Magna 777** also welds ductile iron, "Ni-Resist" and "Meehanite" and provides good weldability of nickel alloys.



*Magna Industrial reserves the right to modify or change this product for purposes of improving its performance characteristics.*  
© 2004 Magna Industrial Co. Limited.

The Magna trade mark is the property of ITW, Inc., and is used under licence by Magna Industrial Co. Limited

**MAGNA INDUSTRIAL CO. LIMITED**  
Total Quality Maintenance